

OUR ENDURING COVENANT



THE CAMPAIGN FOR
ST. MARY'S CHURCH

Our Spiritual Home

More than 8,000 people consider St. Mary's Church their spiritual home, the center of their sacramental life. We invite you to share in our promise as we improve this home, and strengthen the heart of our faith community. Your generosity will enable much needed renovation, expansion and resources to serve our growing congregation. Join us as we take these exciting next steps in the life of our parish.





History

- 1840 – First Catholic family settles in Shrewsbury
- 1868 – First Mass celebrated in the Mulvey home
- 1872 – St. Theresa's Church built
- 1923 – St. Mary's Church established
- 1960 – Existing St. Mary's Church and School built



Existing Challenges

- St. Mary's Parish has grown from 3,500 members in 1960 to more than 8,000 members today
- The population of Shrewsbury is more than 40% Roman Catholic
- Shrewsbury's population is projected to increase 14% from 2002 to 2010, and another 12% from 2010 to 2020
- Expanding parish programs need space for activities, offices, meetings, religious education, etc.
- Space is insufficient for special gatherings, and prohibits concerts, lectures, and other social functions



A Plan Emerges

- Ten years of discussion regarding lack of space and aging facilities, and researching options for the future
- Fr. Paul O'Connell and Fr. Michael Rose have worked with the Parish Council, Finance Committee, Planning and Development Committee, and others to identify needs
- Relocation explored and ultimately deemed impractical
- Most practical solution is renovation and expansion of existing facilities, and construction of a new Parish Center



Forward We Go – Phase I

- Expand Church Seating (4,035 Sq. Ft.)
 - New seating on both sides of existing sanctuary
 - Capacity increased to 932
- Expand Church Hall (4,580 Sq. Ft.)
 - Four new classrooms
 - Multi-use space for religious ed., meetings, and other activities
- Create Gathering Space (8,555 Sq. Ft.)
 - Dual lobby allows access to church and school
 - Multi-use space for family gatherings, meetings, and other social functions
 - New school offices
 - Second floor Media Center and meeting room



Forward We Go – Phase I (cont'd)

- Provide rest rooms on the main and lower levels
- Install air conditioning
- Create additional parking
- Install elevator for improved access
- Redesign for handicap accessibility
- Add new lighting and sound system
- Install sprinklers and fire alarms to code



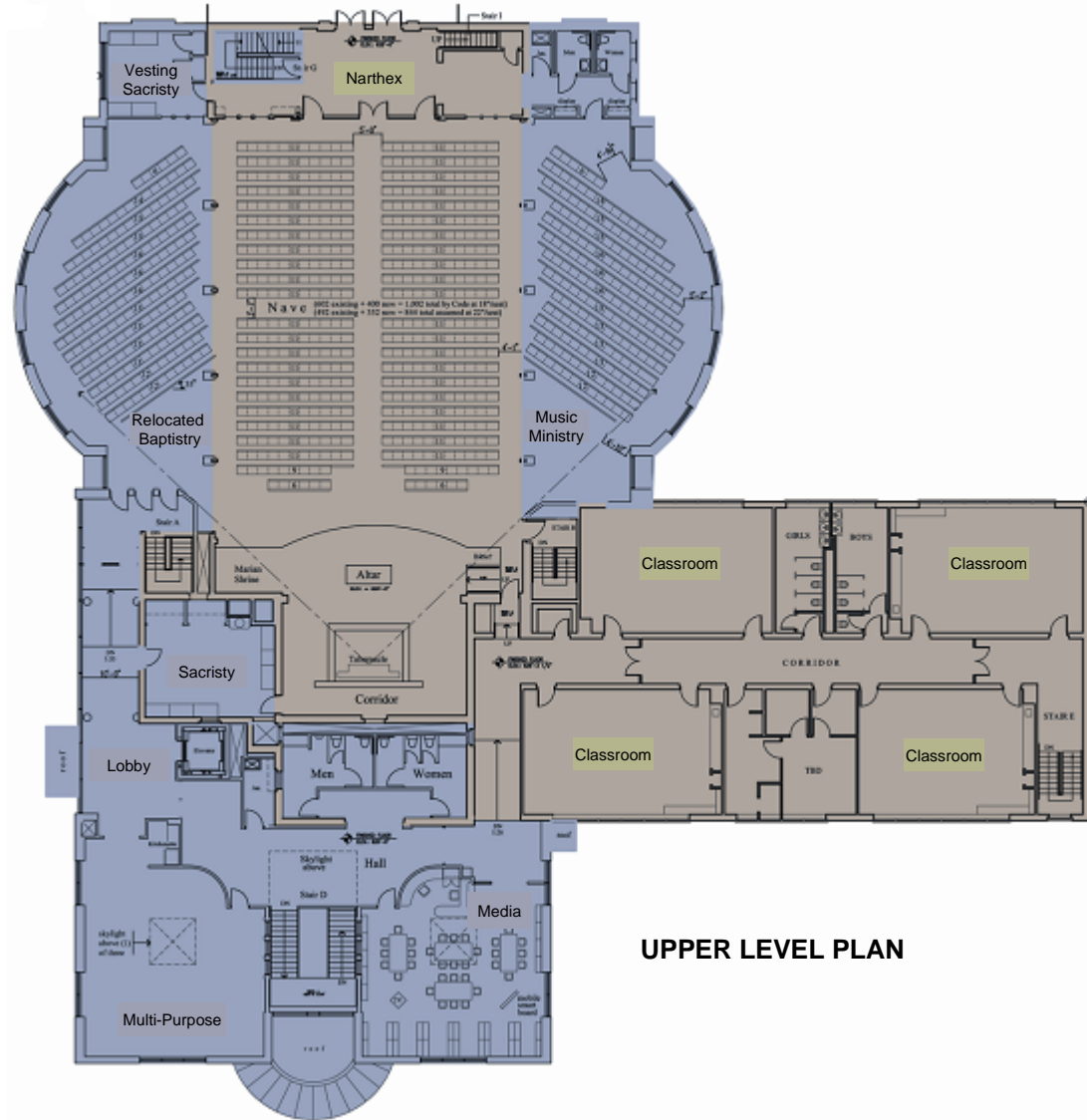
Proposed Floor Plan



Existing
Proposed



Proposed Floor Plan



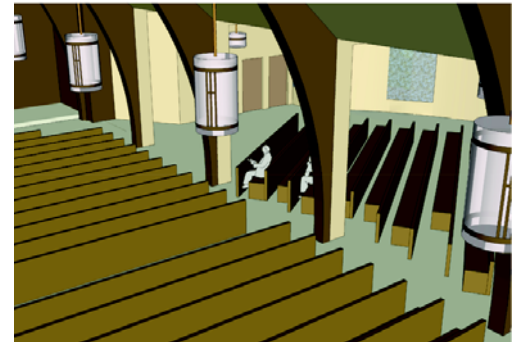
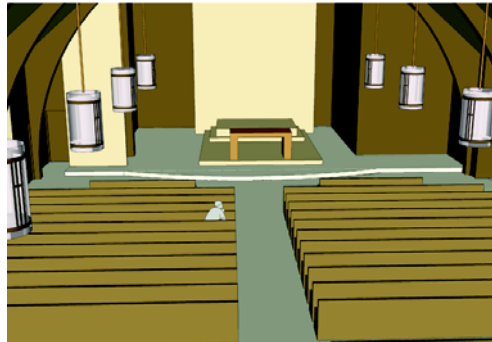
- Existing
- Proposed



South Entrance



West Entrance



Expanded Sanctuary

Aerial View of Property





Forward We Go – Phase II

- Renovate existing kitchen
- Replace school windows with energy efficient models
- Purchase a house for the rectory
- Construct new Parish Center



The Time Has Come

- Projected total cost for new construction, expansion and renovation is \$7,500,000.00
- Groundbreaking anticipated in 2009
- Duration of project will be approx. 18-24 months



The Benefits

The expansion of our facilities will provide us with the space and updated buildings that we so sorely need to do the Church's work and to continue to grow our faith community.

It will provide the opportunity to continue expanding the number of our family and spiritual growth programs, outreach, community events and educational meetings, along with a host of other functions for our growing Parish, and the greater Shrewsbury community.



Invest in the future of St. Mary's Parish

With your support and prayers we will continue to sustain our enduring covenant, building on the earlier efforts of those who helped to strengthen our faith in our Catholic community.

OUR ENDURING COVENANT



THE CAMPAIGN FOR
ST. MARY'S CHURCH